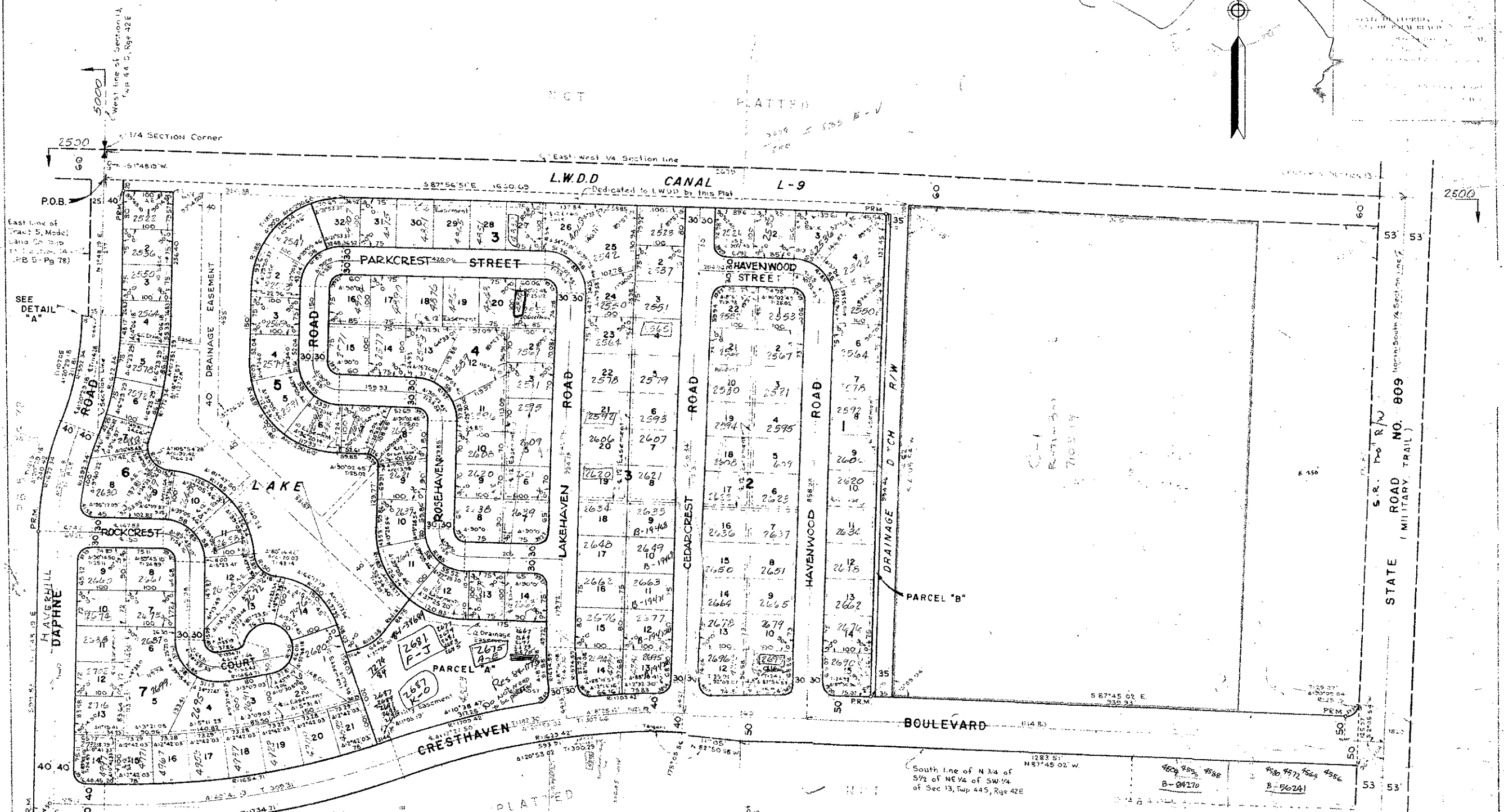
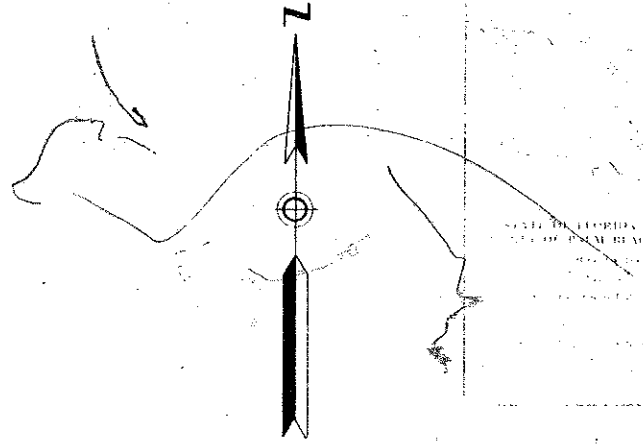


PLAT NO. 1
CRESTHAVEN OF PALM BEACH

IN 2 SHEETS SHEET NO. 2



NOTE
Building Setback Lines shall be as required by Palm Beach County Zoning Regulations.
There shall be no buildings or other structures placed on Utility Easements.
There shall be no buildings or any kind of construction or trees or shrubs placed on Drainage Easements.

NOTE
Block Corners are rounded with a 25 ft. radius curve, unless otherwise shown.
Easements are for Public Utilities, unless otherwise noted.
6' x 18' Anchor Easements (A.E.)

CRESTHAVEN OF PALM BEACH

27/213
0231-3073 & 14-44-42
PLAT NO. 1
CRESTHAVEN OF PALM BEACH
SHEETS SHEET NO. 2
27/213

27-213

17/10/14

Abbott

PLAN PREPARED BY: [unreadable]
RECORDING INFORMATION: [unreadable]

SECTION CORNER
WEST LINE OF SECTION 13,
TAP 44 S., RGE 42 E

SECTION CORNER
WEST LINE OF SECTION 13,
TAP 44 S., RGE 42 E